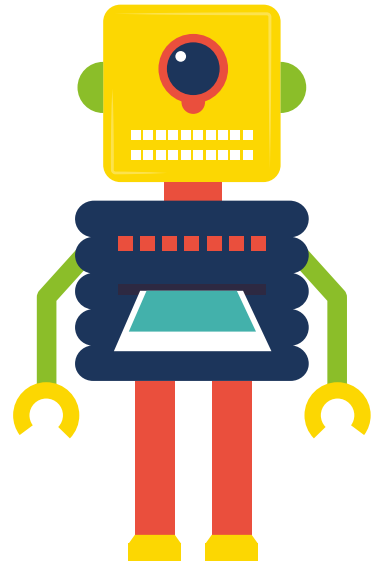


HOW DOES EMR RECYCLE METAL?



1

1. Materials can be collected by Currys PC World or by one of EMR's lorries. They can also be taken to an EMR recycling centre or to a Currys PC World store.



2

2. Once collected, they are weighed on a large scale. Some are so big that trucks can easily drive onto them. These are called a weighbridge.



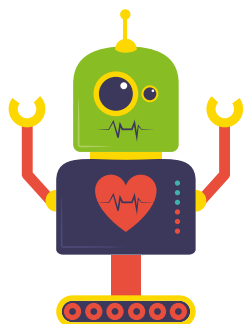
3

3. Some materials that come to us are quite big. We use massive machines to break it down to make smaller and easier to move. This also makes it easier to separate into different materials, like plastic and metal.



4

4. Once the metal has been weighed or broken, it is sorted into different materials in a number of different ways, including using water to separate heavy and light materials, or lasers and magnets to detect different metals. We have a separate recycling centre for plastics.



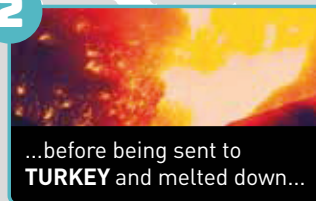
5

5. Once the materials have been sorted and separated, they are sent around the world to places like Turkey, China and America. There is a huge network of trains, ships and trucks to transport metal. The metal is sent to foundries and steel mills where it is melted down and made into new, clean metal.

1



2



3

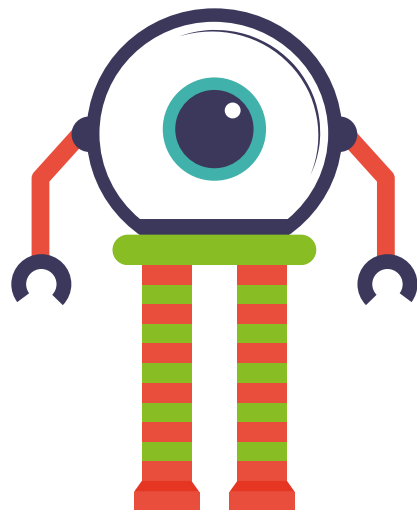


Here is an example of what could happen:

6



6. The clean, fresh metal is then sent to manufacturers and factories where it is used to make new products and sold to a customer. Eventually, when it is old or damaged, it will be sent off to be recycled again.



WHAT MACHINES ARE USED?

EMR uses massive machines to make some of the bigger pieces of metal smaller and to help move metal around easily. These machines include:



THE SHREDDER: A mega machine that shreds metal into tiny little pieces! It can demolish a car into pieces the size of your hand in just 15 seconds!



THE BALER: This squishes metal into compact cubes so that they can easily fit onto trains and trucks for transportation.



THE SHEAR: Its massive blade chops large pieces of metal down into smaller pieces so our cranes can easily move them.



A CRANE: large cranes are used to pick up and move materials around a site. They also help load trucks, trains and ships to transport metal.



Now you've learnt about the different techniques and machines we use, watch our video: <https://www.youtube.com/watch?v=m9a4teRFAi8&feature=youtu.be>

Design your own metal recycling site using what you have learnt today. **Share your design using #Recyclabots.**